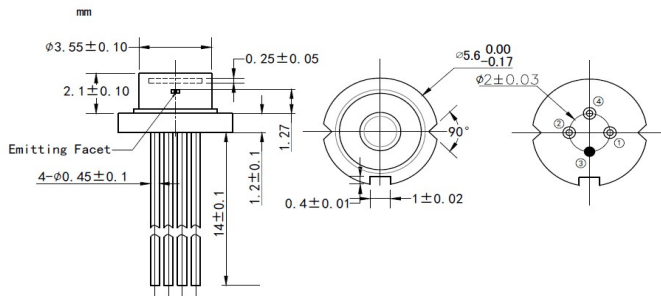


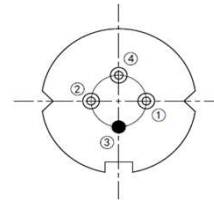
1550nm 15mW Single Mode Laser Diode

| Part Number | | WSLD-1550-015m-1-PD-F | |
|--------------------------------------|------------------------------|-----------------------|-----------------|
| PARAMETER | SYMBOL | VALUE | UNIT OF MEASURE |
| Reverse Voltage | V_r | 2.0 | V |
| Operating Temperature | T_{op} | -10~+50 | °C |
| Storage Temperature | T_{stg} | -40~+85 | °C |
| Lead Soldering Temperature (10 sec.) | T_{is} | 260 | °C |
| Typical Specification (@25°C) | | Min. | Typical Value |
| Optical Specifications | Center Wavelength | 1550nm +/-10nm | |
| | Output Power | ---- | 15mW |
| | Spectral Width(FWHM) | ---- | 2.0nm |
| | Wavelength Temp. Coefficient | 0.09nm/°C | |
| | Laser Type | DFB | |
| | Beam Type | Single Mode | |
| | Beam Divergence(FWHM) | ---- | 20° Lx9° // |
| Electrical Specifications | Slope Efficiency | ---- | 0.3mW/mA |
| | Threshold Current | ---- | 5mA |
| | Operating Current | ---- | 80mA |
| Photodiode Specifications | Operating Voltage | ---- | 1.4V |
| | Photodiode | Built-in | |
| | PD Current | ---- | 0.5mA |
| Other Specifications | PD Reverse Voltage (Max.) | 15V | |
| | Package Style | TO18 (5.6mm) | |
| Window Type | | Flat Window | |

**Product Package View:
TO18 (5.6mm) Package:**



PIN Bottom View (A-Type):



| | |
|-------|------------|
| Pin-1 | PD(+) |
| Pin-2 | LD(-) |
| Pin-3 | LD(+),CASE |
| Pin-4 | PD(-) |